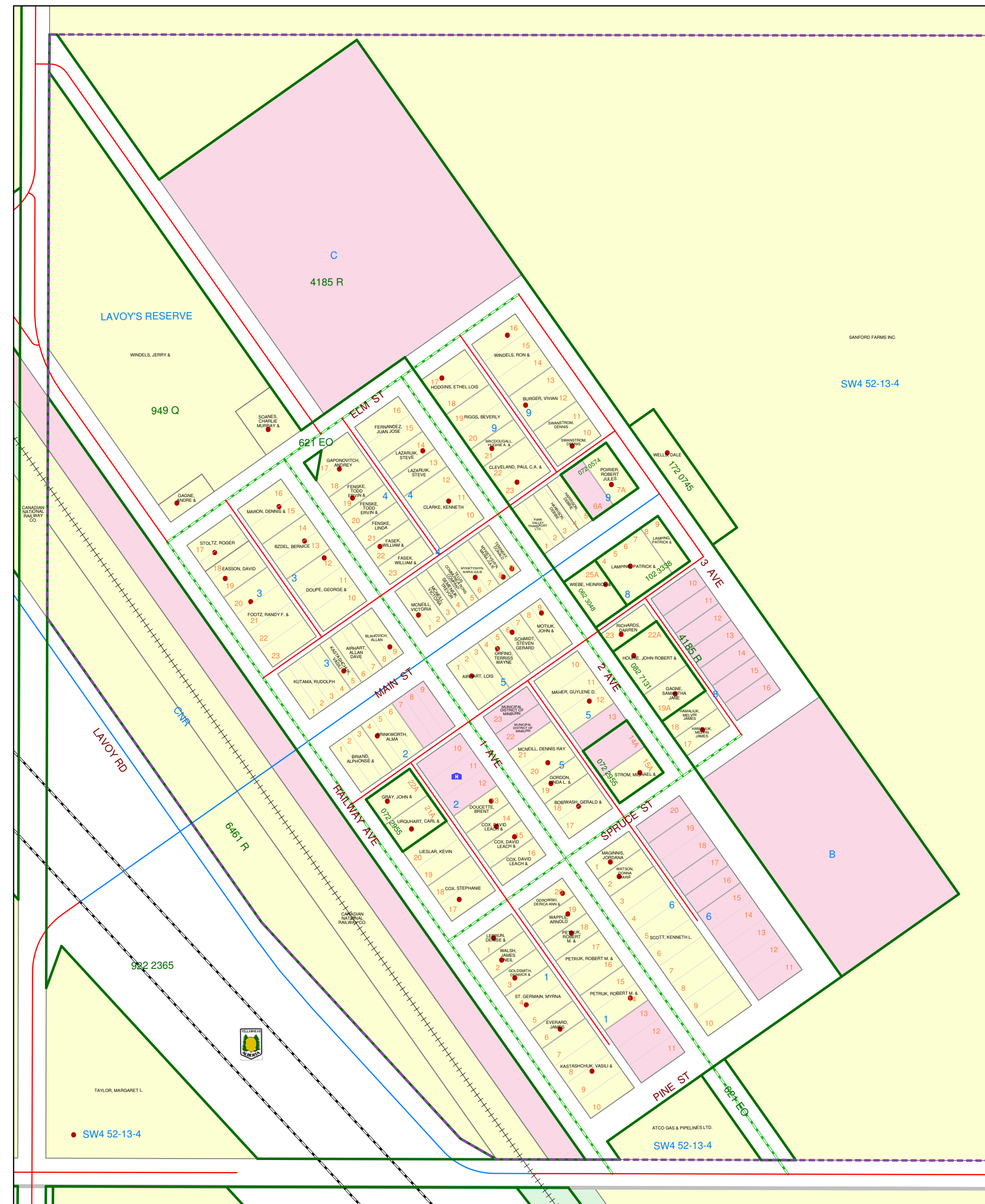


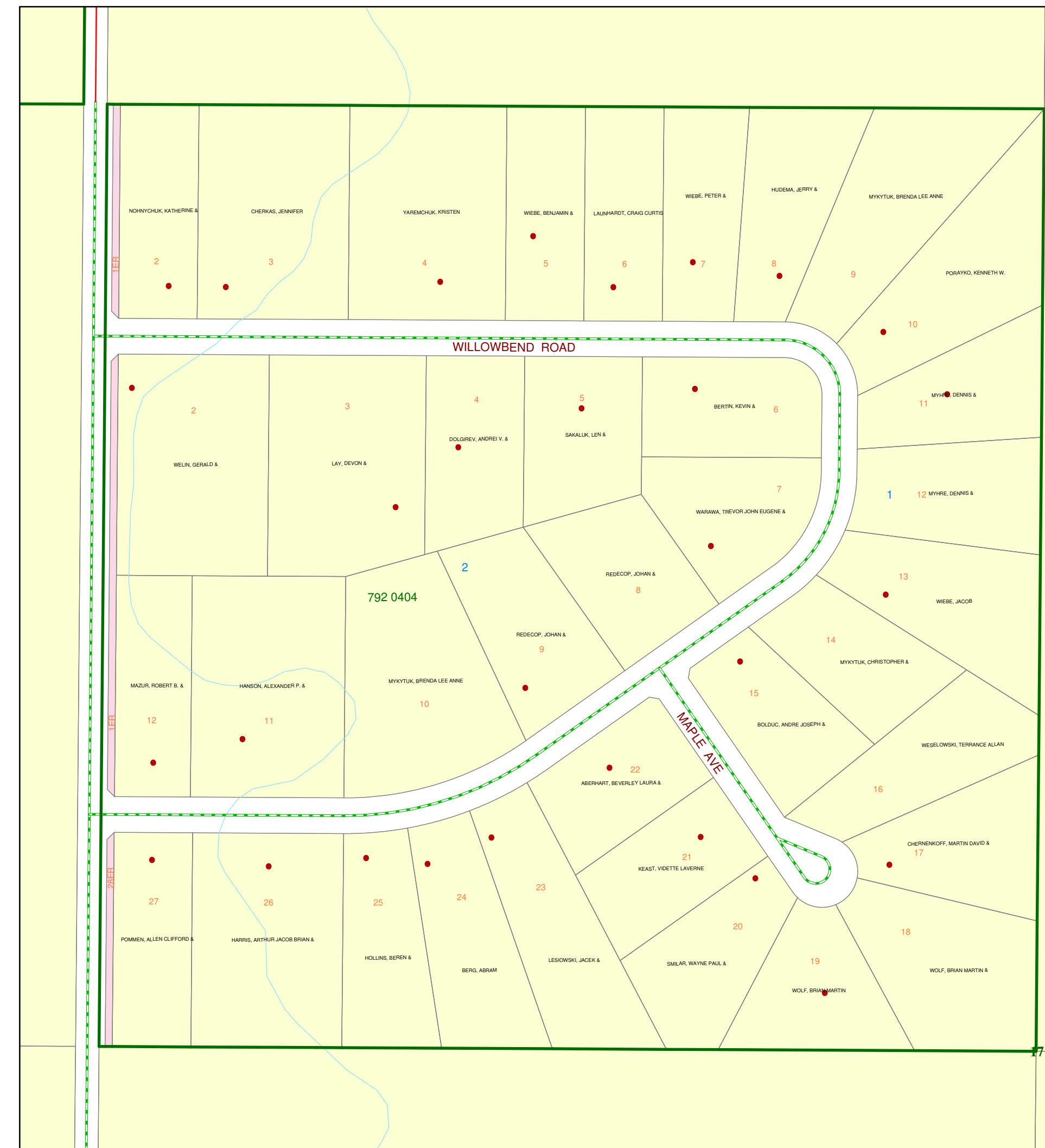
County of Minburn 2019 Ownership Map

Legend			
Map Features	Transportation	Land Classification	Labels
Church	Paved Highway	Lot Line	Block Number
Community Hall	Gravel Highway	Registered Plan	Lot Number
Residence	Paved Road	Hamlet Boundary	Plan Number
School	Gravel Road	Titled Property	Street Label
Tower	Oil Road	Municipal Property	
	Truck Trail		
	Undeveloped Road		
	Unimproved Road		
	Private Road		
	Railway		

Hamlet of Lavoy Scale = 1:2,500



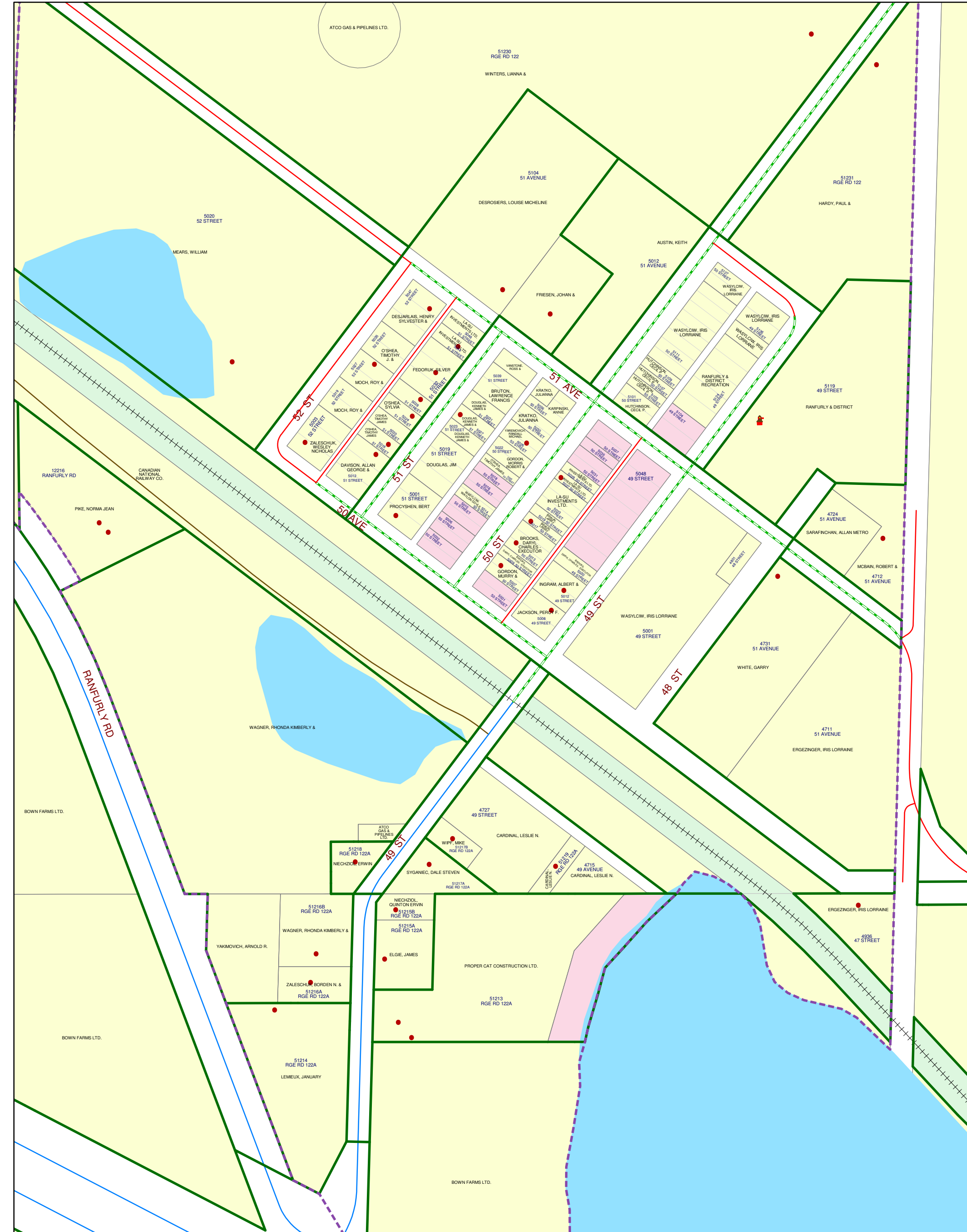
Brookwood Subdivision Scale = 1:3,500



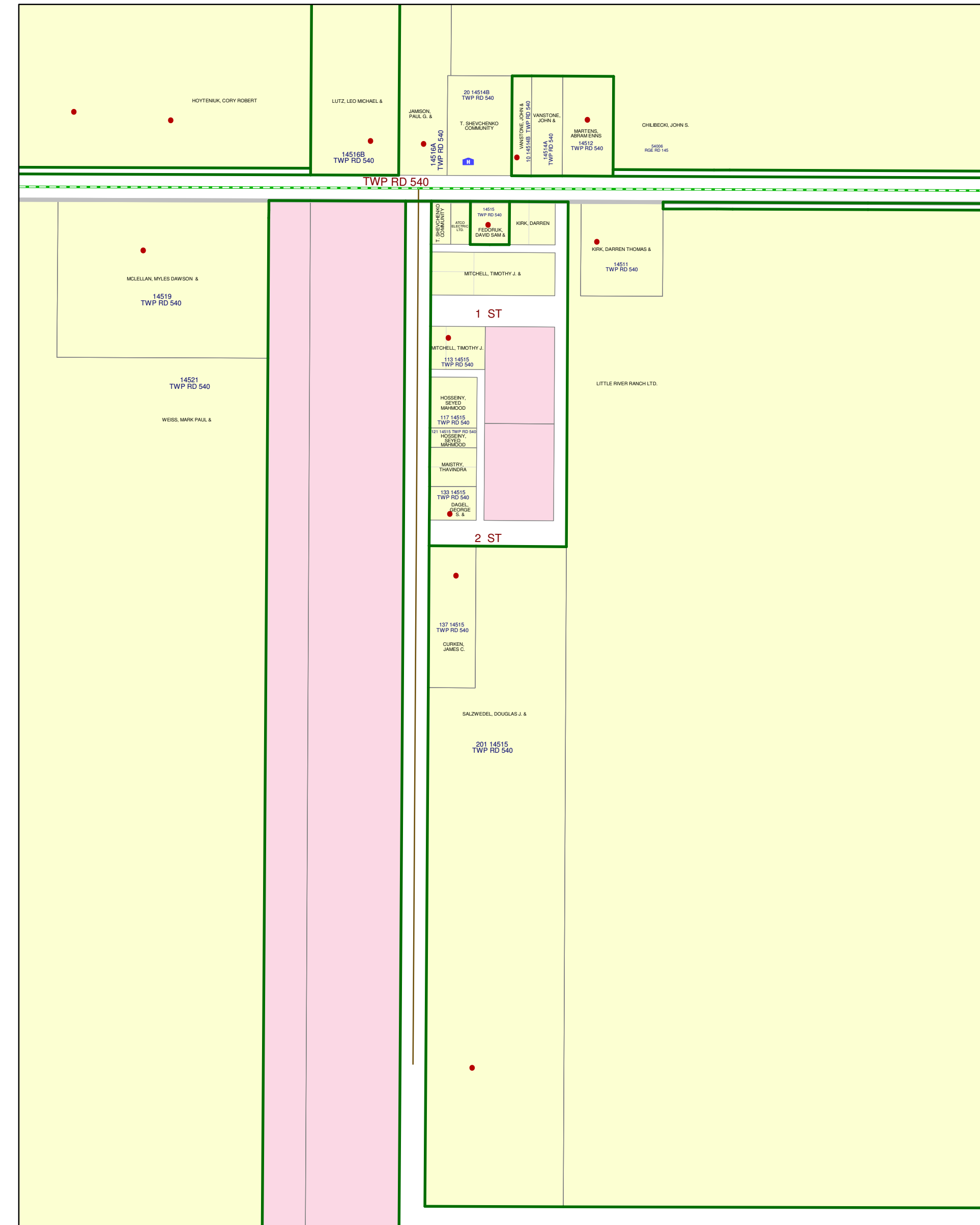
Wapasu Subdivision Scale = 1:3,000



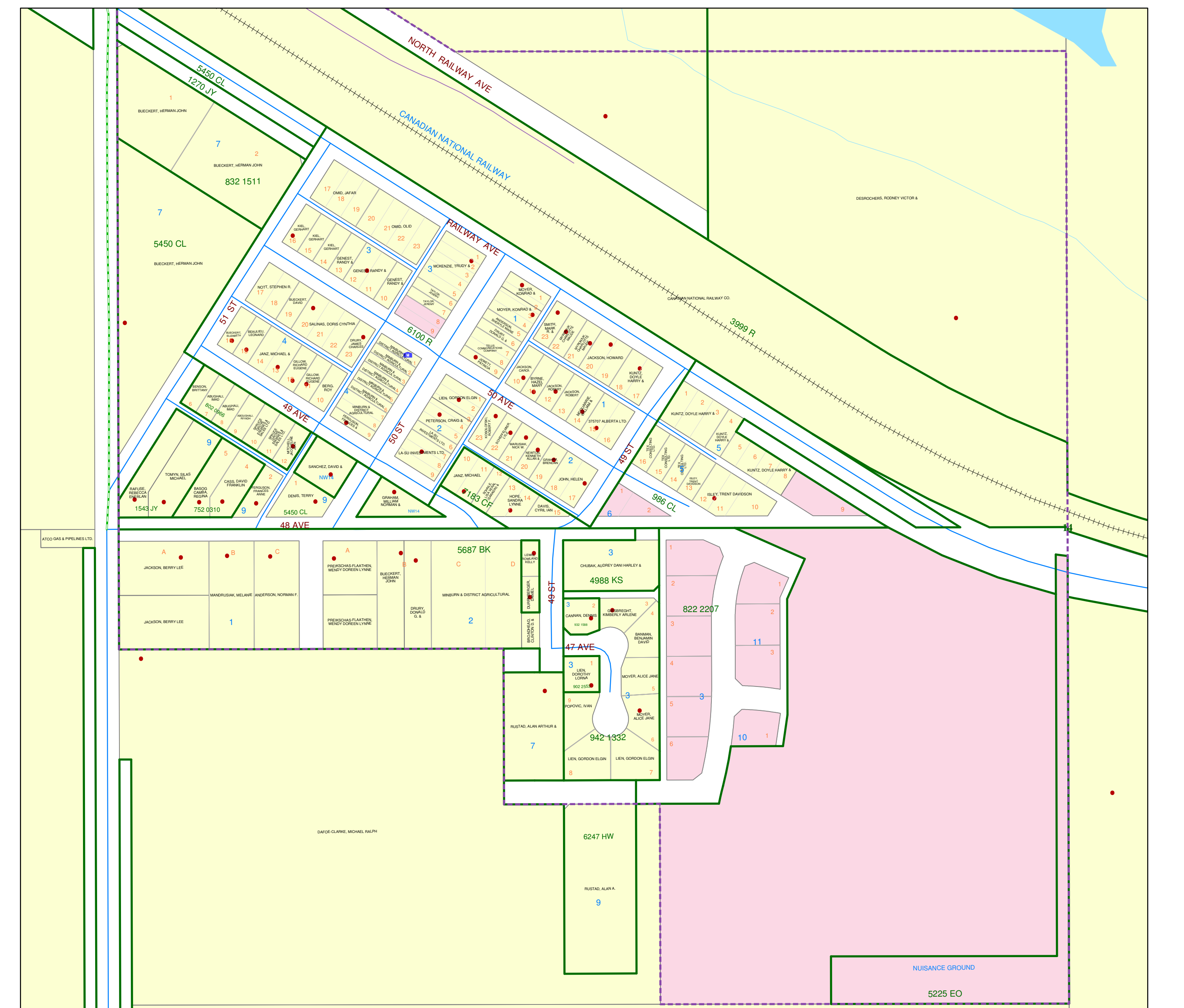
Hamlet of Ranfurly Scale = 1:3,000



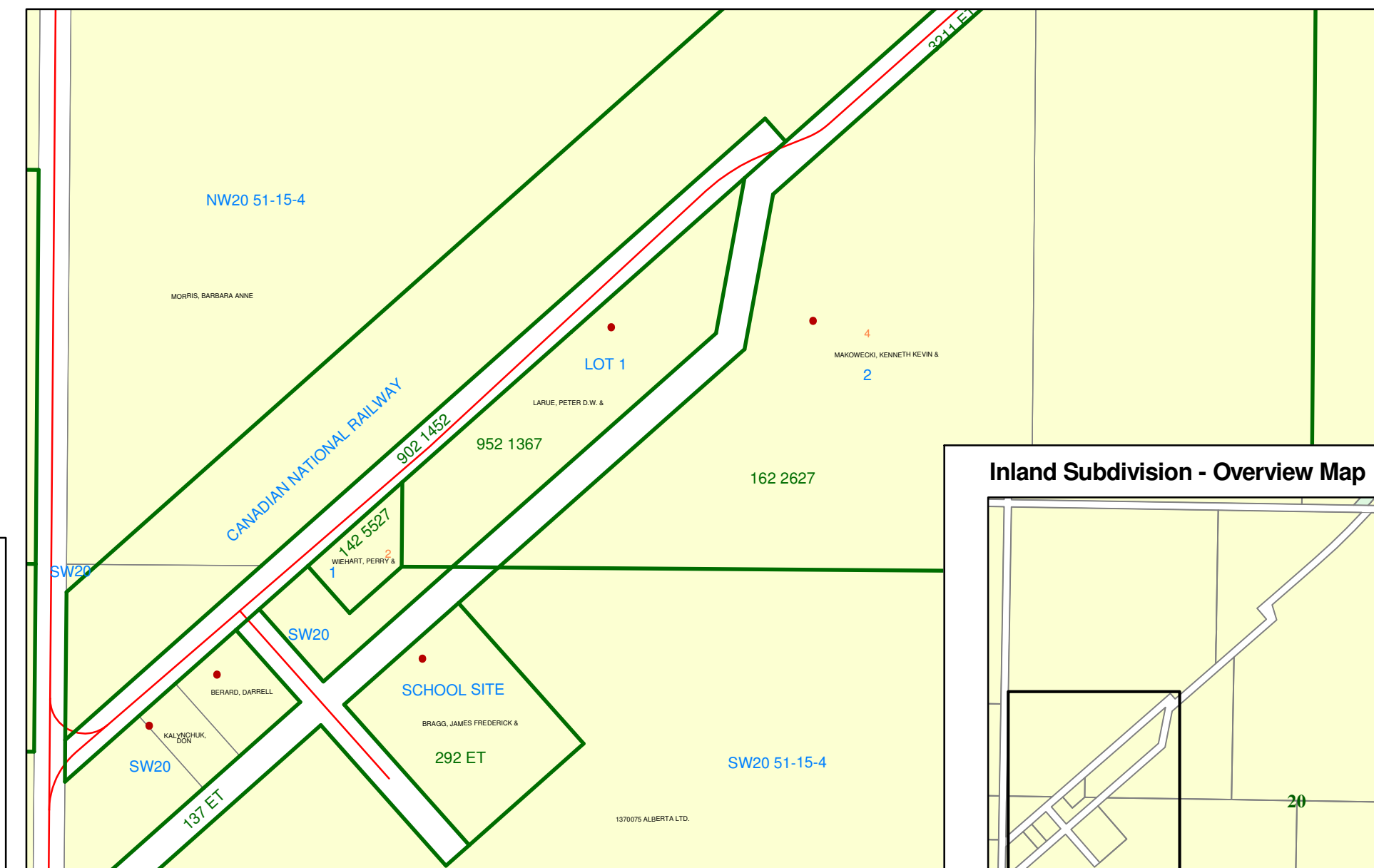
Warwick Subdivision Scale = 1:3,000



Hamlet of Minburn Scale = 1:2,500



Inland Subdivision Scale = 1:3,500



**COUNTY OF MINBURN
OWNERSHIP MAP**

4909 - 50 Street, Box 550
Vegreville, Alberta
T9C 1R6
Phone: (780) 632-2082
Fax: (780) 632-6296

County of Minburn makes no representations or warranties regarding the information contained in this document, including, without limitation, whether said information is accurate or complete. Persons using this document do so solely at their own risk, and County of Minburn shall have no liability to such persons for any loss or damage whatsoever.

This document shall not be copied or distributed to any person without the express written consent of County of Minburn.

© 2019 County of Minburn. All Rights Reserved.

Compiled from the Rural Cadastral Digital Base August 15, 2019, 1:20,000 Digital Base. Land Ownership derived from municipal tax data, August 15, 2019. Building/Site/Feature information compiled from municipal assessment data, December 2018.

Due to name length and parcel size some parcels cannot be labeled.
NOT RESPONSIBLE FOR ERRORS OR OMISSIONS



Projection:
UTM Zone 12 NAD 83

Date:
August 30, 2019